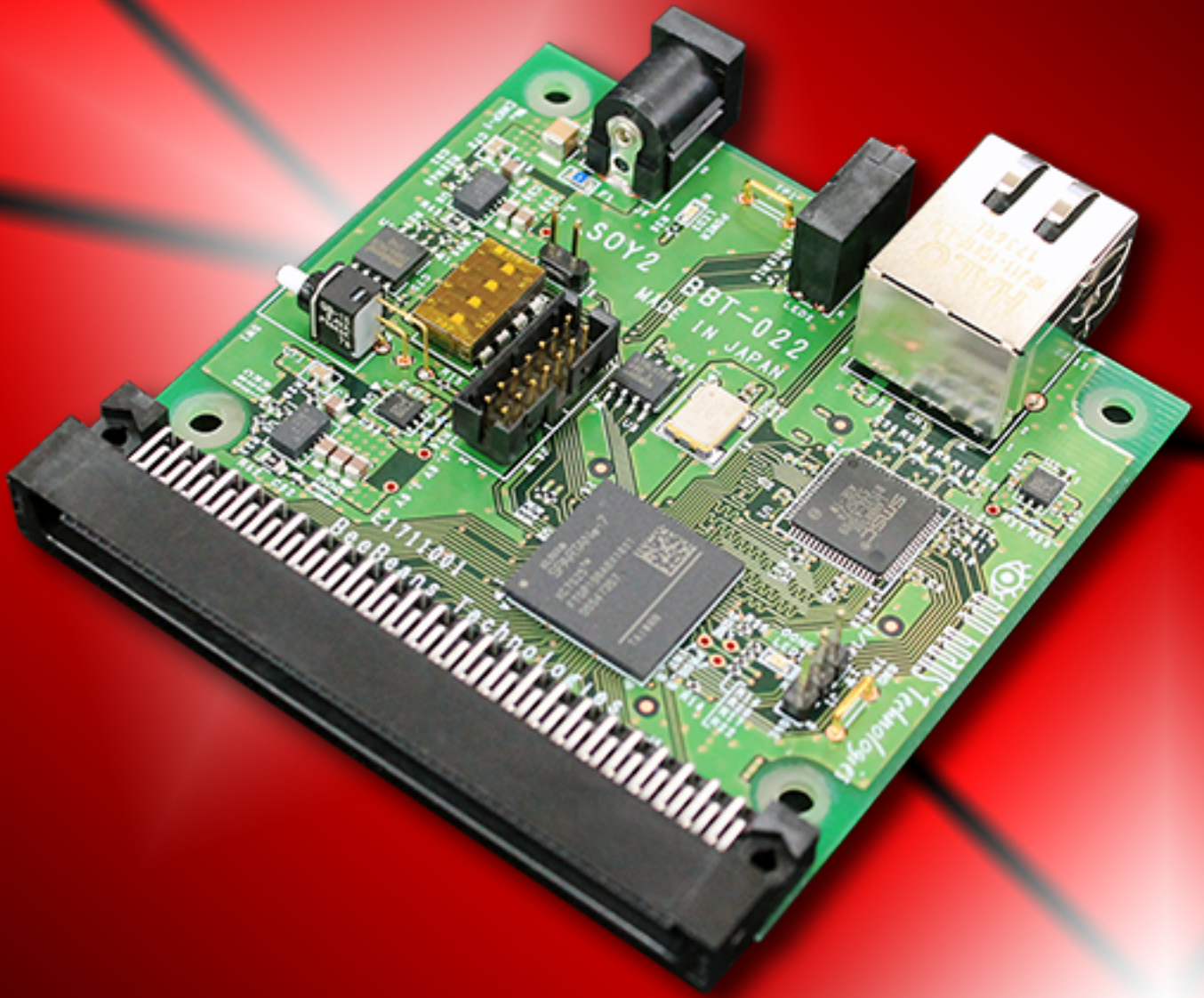


# SOY2 BBT-022



bee beans<sup>®</sup>



# SOY2 BBT-022



SOY2 is a general-purpose SiTCP board with a Xilinx 7 series FPGA (Spartan-7). You can use the board for SiTCP evaluation, or attach it to your device. Shape of the board is compatible with BBT-006 SOY-100M, and is capable of gigabit-ethernet communications.

## Features

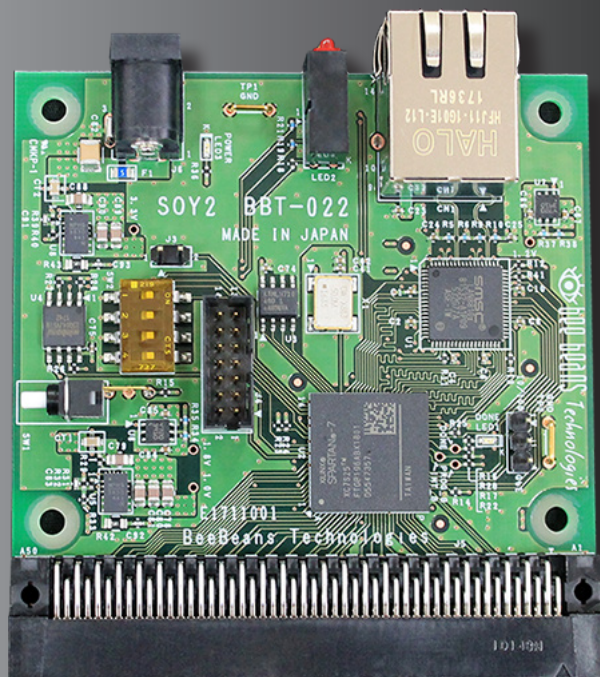
- \*The board transfers large data via high reliable TCP.
- \*The transfer speed is about 90% of line rate.
- \*The board has a UDP protocol to be used as setting register.
- \*With provided utility program, you can set IP address or TCP/UDP port.
  - ※ The address or port number can be set with control program.
- \*The firmware can be downloaded via Ethernet without using Xilinx Platform Cable USB II . And programs can be developed using Vivado(Xilinx Vivado WebPack Edition: Free of Charge).
  - ※ Xilinx and Vivado are registered trademarks of Xilinx, Inc.

## Specification of Communication

- \*Ethernet: 1000BASE-T/100BASE-TX/10BASE-T
- \*TCP Session Limit: 1, Operate as a server
- \*UDP Communication Protocol: RBCP

## Specification of Component

- \*Equipped FPGA: Spartan-7(XC7S25-1FTGB196C standard)
  - ※ XC7S50-FTGB196 is also available.
- \*LAN Connector: RJ45
- \*Interface for External Device: FX2-100P-1.27DS .
  - ※ For the external device, use FX2-100S-1.27DS or others.
- \*Power Supply: Use an AC adapter, or is supplied via the connector (FX2-100P-1.27DS).
- \*Triple LED
- \*4 Position DIP Switch
- \*Push Switch
- \*Outline Dimension: 74mm × 76.9mm(NOT include Projections)
- ※ The above specifications may change without notice.



## BeeBeans Technologies Co.,Ltd

2F,109.Oho,Tsukuba City,Ibaraki,Japan 300-3256 TEL:+81-29-875-3642 FAX:+81-29-875-3564  
A308,162-1,Shirakata,Tokaimura,Nakagun,Ibaraki,Japan 319-1106  
TEL:+81-29-219-7159 FAX:+81-29-219-7169  
[www.bbtech.co.jp](http://www.bbtech.co.jp)

